



PRODUCT BULLETIN

Carrier Airconditioning & Refrigeration
Limited

Page 1 of 3

Issued:
25 Jan 2018

Bulletin No. 2018/01/CST/02
Department - Engineering

Supercedes: 2016/LC-002

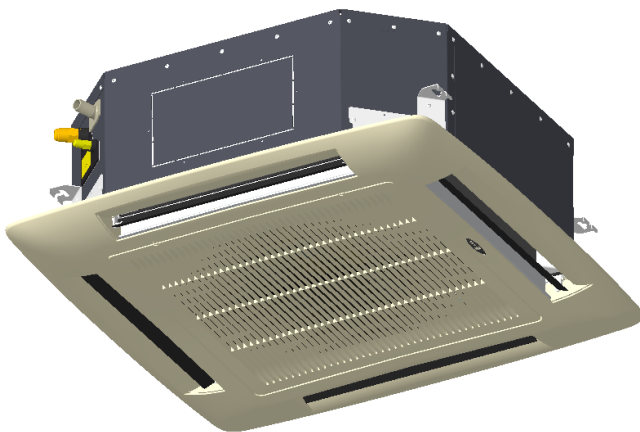
SUBJECT: 3.0 TR & 4.0 TR Cassette Model (R22 & R410A) with new grill.

Purpose:

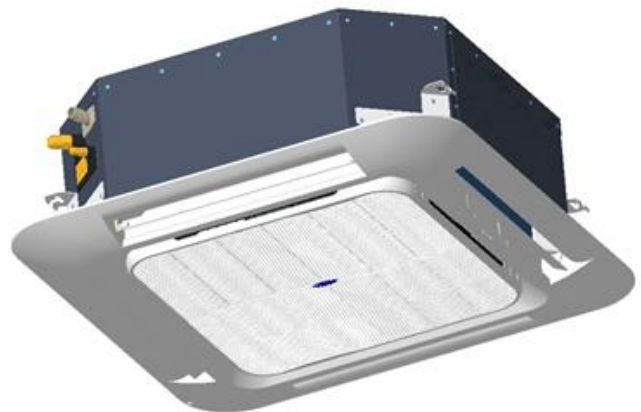
This bulletin is to inform obsolescence of 3 & 4 TR model with old grill and continue offering 3 & 4 TR units with localized grill inline with newly developed 1.5 & 2.0 TR cassette model.

Appearance:-

Existing grill



New grill



Overall grill dimensions, grill mountings and electrical connections remains same as existing grill.

Key Highlights:-

- Catalogue Ratings (Cooling Capacity & COP) remains same as existing.
- Air intake area of grill is increased with additional 4 inlet ports.
- Grill Display PCB is new but compatible with same controller and remote.
- New grill is interchangeable with existing grill.
- For ease of serviceability, air filter removal mechanism is made simpler which can be removed by pressing push buttons in return air grill.(Please refer Service Bulletin)

Product Codes:-

Product		Obsolete models (Old Grill Models)			New Grill Models		
		Product SAP Code (Full System)	FG SAP Code		Product SAP Code (Full System)	FG SAP Code	
			IDU	CDU		IDU	CDU
R22	3.0 TR	5003231	5003233	5002923	5003472	5003473	5002923
	4.0 TR	5003230	5003234	5002944	5003474	5003475	5002944
R410A	3.0 TR	5003239	5003240	5002992	5003476	5003477	5002992
	4.0 TR	5003241	5003242	5003018	5003478	5003479	5003018

Old Grill Code	New Grill Code
1511081	1511517

(Note: Grill is a part of indoor unit)

Technical Specifications: -

PARAMETER \ Category		UOM	3.0 TR- R22	4.0 TR-R22	3.0 TR R-410A	4.0 TR R410A
GENERAL	MODEL No (INDOOR)		40GKX-036RD	40GKX-048RD	40GKX-036GD	40GKX-048GD
	MODEL No (OUTDOOR)		51MSG-036RSA	51MSG-048RSA	51MSG-036GSD	51MSG-048GSB
	NOMINAL COOLING CAPACITY	Watts	10551	13775	10551	13775
	BEE Star Rating		-	-	-	-
	RATED POWER SUPPLY	V-Ph-Hz	230 ± 10% - 1 - 50	230 ± 10% - 1 - 50	230 ± 10% - 1 - 50	230 ± 10% - 1 - 50
	RATED POWER SUPPLY - Outdoor	V-Ph-Hz	400 ± 10% - 3 - 50	400 ± 10% - 3 - 50	400 ± 10% - 3 - 50	400 ± 10% - 3 - 50
	NET WEIGHT - INDOOR / OUTDOOR / GRILLE	Kgs	38 / 72 / 5	40 / 77 / 5	38 / 72 / 5	40 / 77 / 5
	AIR FLOW RATE	CFM	950	1070	950	1070
	FAN MOTOR (INDOOR)	# of Speeds	3	3	3	3
	FAN MOTOR (OUTDOOR)	# of Speeds	1	1	1	1
	COMPRESSOR TYPE		Scroll	Scroll	Scroll	Scroll
	Flare Connection : Liquid Line	Inch	3/8"	3/8"	3/8"	3/8"
	Flare Connection : Gas pipe	Inch	3/4"	3/4"	3/4"	3/4"
	OVERALL SIZE	INDOOR UNIT (HEIGHT)	mm	298	298	298
INDOOR UNIT (WIDTH)		mm	825	825	825	825
INDOOR UNIT (DEPTH)		mm	825	825	825	825
PROJECTED GRILLE UNIT (HEIGHT)		mm	30	30	30	30
GRILLE UNIT (WIDTH)		mm	960	960	960	960
GRILLE UNIT (DEPTH)		mm	960	960	960	960
OUTDOOR UNIT (HEIGHT)		mm	820	820	820	695
OUTDOOR UNIT (WIDTH)		mm	904	904	904	1030
INDOOR	Heat Exchanger Details	Fin Length	915 X 2	915 X 2	915 X 2	915 X 4
		No. of rows	2	4	2	4
		No. of tubes / Row	9	11	9	11
		Tube Diameter	9.52	7	9.52	7
		Fin density	18	18	18	18
	Blower Diameter	mm	450	450	450	450

(For more details on Grill installation, Filter cleaning and spare list, refer installation and Service Manual)